

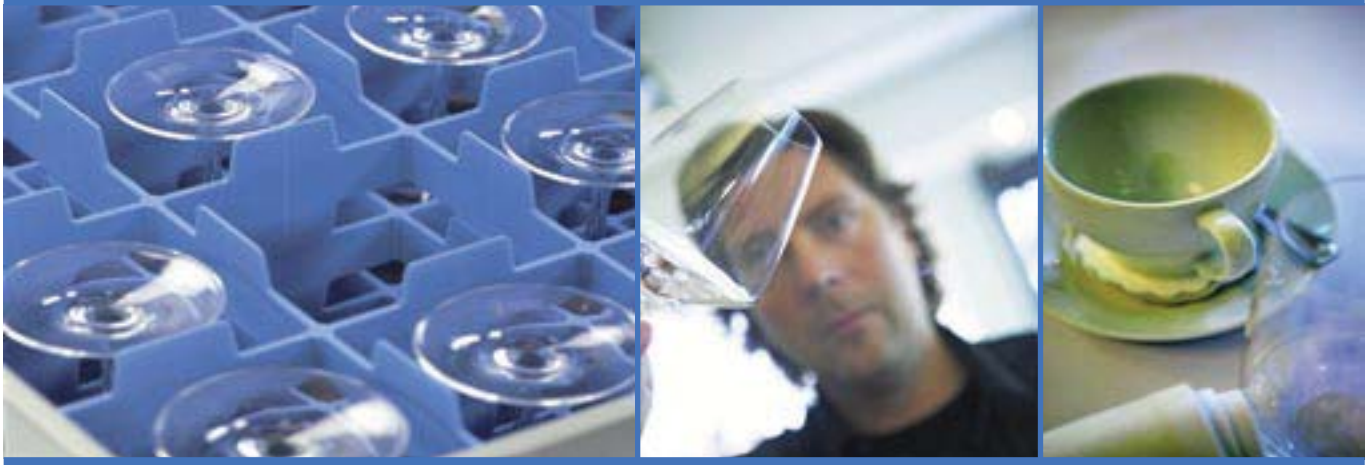
Pot dishwasher

■ WD-12GHE



Wexiödisk 

■ Our history – clean dishes



Wexiödisk was founded in 1972

The three founder members, with experience from production and development of catering equipment, saw a possibility to supply a range of dishwashers within reach for distributors outside the large established organisations. Through knowledge, foresight and also an ambition to offer something really good a range of quality machines was created. The extraordinary high quality and new innovations gave quick selling success even outside Sweden.

Our quality

Our ambition from the start has been that all our customers are satisfied. Therefore we focus on being able to offer operation safety, low operation costs and also a good working environment rather than focusing on low price. In other words an early focus on Life Cycle Cost. Excellent dishwashing result goes without saying.

Our partners

We have carefully chosen our partners who distribute, sell and service our products. Together, through a close dialogue, good product support system and training, we fulfil our customers expectations. Today Wexiödisk is the leading supplier in Scandinavia, with not only a distribution network in Europe but also for example in Japan and Australia. During later years Wexiödisk have even had prestigious projects in the inflight catering sector, a customer group with very high demands.

Our products

We will continue our focus on product development, to keep and improve customer satisfaction by having a competitive and technically advanced product range. To realize it, we use latest technology together with skilled and competent employees. A complete production set up, from raw materials to final product test, equipped with automated machines and robots secure quality and accessibility.

Our environmental focus

Dishwashers use large amounts of energy, water and chemicals. Therefore in more recent years Wexiödisk have focused even more on the environmental aspect, which has led to the development of new unique products. ICS+ and DUPLUS are two of the new patented techniques that reduce the environmental impact. This also reflects in a considerable lower operation cost.

Everyday facts

Wexiödisk is situated in Växjö in South Sweden. The plant is about 11000 m². Number of employees about 175.

Our ambition

Every installation should be a good reference.



WD-12GHE Pot dishwasher

- **Flexible pot dishwasher** with large dishwashing area, feed clearance height of 600 mm and internal width of 1158 mm. The machine has normal and heavily soiled settings.
- **Powerful and effective** – extraordinary washing results with dual pumps and rinsing system.
- **Hygienic** – the machine meets the strictest hygiene requirements thanks to automatic control of final rinse temperatures and water quantity.
- **Ergonomic** – automatic opening of the hood on completion of the washing program, option to connect an infeed and outfeed bench for washing throughput.
- **Service-friendly** – servicing is normally carried out from the front of the machine.

Conveyor belt and basin conveyor are included in the range.



The control panel of the machine is user-friendly. The panel shows important information such as the selected program, remaining washing time, temperatures, alarms, number of baskets washed, etc.

In addition to showing the ordinary program selection P1-P3, the displays also show when the cleaning program and pause function (program P0) are activated.

WD-12GHE – a pot dishwasher with a large washing compartment and a long service life

The WD-12GHE is an efficient and flexible pot dishwasher with a large washing compartment. The clearance feed height is 600 mm and the internal width is 1158 mm. The internal depth of the machine from front to back is 565 mm.

The adjustable rinsing pressure is one of a number of innovative solutions. The machine can be reset quickly and easily between normal and heavily soiled settings.

The WD-12GHE is ideal for demanding environments. The machine is electronically controlled and has an automatic hood lift and three washing programs.

Powerful construction – efficient

The machine is made from double-skinned stainless steel sheet which is fitted with sound and heat insulation as standard. A stainless steel basket measuring 1040x550 mm and two standard baskets 500x500 mm are included and contribute to superb flexibility and capacity.

The dual pumps and rinsing system produce extraordinarily good washing results. Efficient tank filters enable long washing sessions without the need to replace the water, contributing to the best possible results.

Hygienic

The wash arms are emptied of washing water when the final rinse starts in order to give the best possible wash results and high levels of hygiene. When the wash program finishes, the load can be removed from the dishwasher without any remaining washing water dripping onto clean dishes and plates.

The wash programs' washing and rinsing times can be adjusted to suit requirements. The control system monitors all functions, e.g. water quantity and final rinse temperature. The remaining washing time can be seen on the control panel display. The electronic function alerts you if the washing temperature is too low. This reduces the risk of foam forming and poor washing results.

An automatic cleaning program makes it easier to clean the inside of the machine. The control system ensures that hygiene requirements in accordance with the HACCP quality system are met.

Ergonomic

The use of an opening hood enables throughput from a dirty to a clean side, giving hygienic and ergonomically correct handling of the dishware.

On the WD-12GHE, the hood opens automatically when the wash program has finished. The hood lifts up a few centimetres and then stops to allow the hot steam to discharge before the hood lifts up to its highest position. The load starts to dry immediately and the basket can be removed from the machine. The next basket can then be put in. With the press of a button the hood is closed and the program restarts. The automatic hood improves the ergonomics for the user and makes washing more efficient.

Service-friendly

The WD-12GHE is very service-friendly. Most components are easily accessible and servicing can normally be carried out from the front of the machine.



The unique washing system, with the option of choosing between normal and heavily soiled loads, increases the versatility of the machine. The WD-12GHE can be used in most installations where loads are usually mixed and have high capacity requirements.



Heavily soiled load



Normally soiled load

Technical data

Technical data	WD-12GHE
Wash pump (kW)	2x2,2
Booster heater (kW)	12
Heater tank (kW)	9
Tank volume (litres)	140
Weight machine in operation (kg)	480
Degree of protection (IP)	55

Capacity and operation data	WD-12GHE
Total time/wash program 1 (min)	1,2**
Total time/wash program 2 (min)	3,2**
Total time/wash program 3 (min)	5,2**
Capacity, max (baskets/h)	100
Water consumption rinse/program (litres)	2x4
Energy consumption (kWh of connected power)	70-90%
Sound level* (dB(A))	67

* Measured 1 metre from the machine

** Factory setting. The wash time is adjustable

Connection, machine	WD-12GHE
Total connected power (kW)	16,4
Main fuse 400V 3N~ (A)*	35
Max.conn.area 400V 3N~ (L1-L3,N,PE) Cu (mm ²)	16

* Other voltages on request

Connection water, drain and ventilation	WD-12GHE
Water quality, hardness (°dH)	2 - 7
Hot water conn. 55-70°C (internal thread)	R ¾"
Cold water conn.hood lift, 5-12°C (internal thread)	R ½"
Drain connection, PP pipe (ø mm)	50
Water capacity warm water, pressure (kPa)	250
Water capacity warm water, flow (litres/min)	38
Water capacity cold water hood lift, pressure (kPa)	300
Water capacity cold water hood lift, flow (litres/min)	15
Floor drain, capacity (litres/sec).	3
Ventilation of the machine (m ³ /h).	600

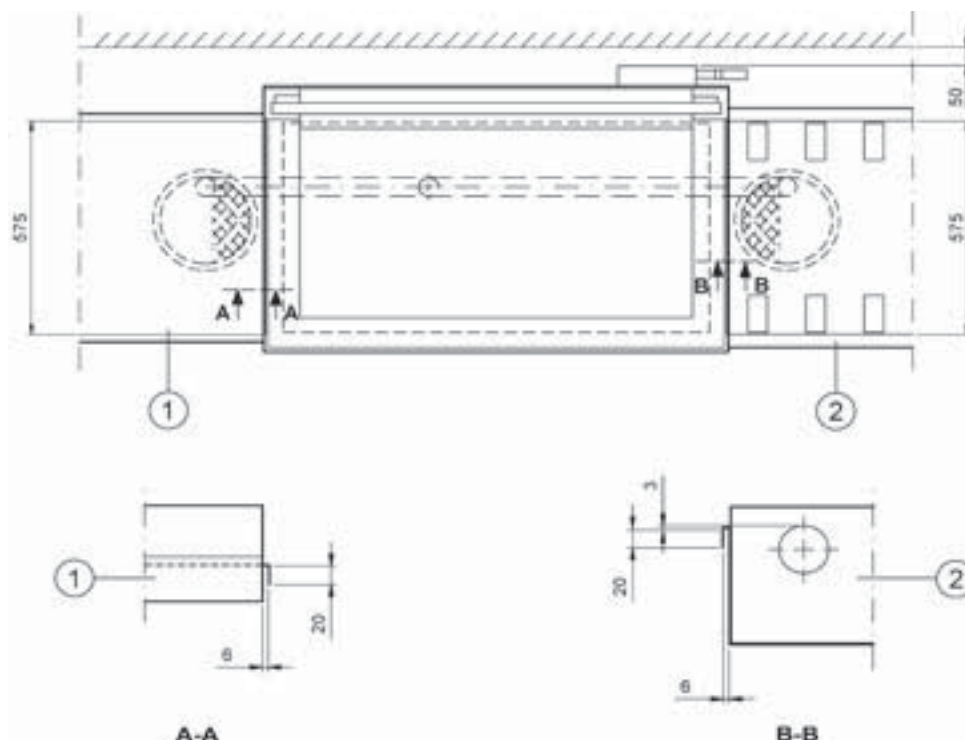
Size and weight for transportation	WD-12GHE
Size * LxWxH (mm)	870x1240x1960
Weight * (kg).	355

* Packaging included

Article numbers - Extra equipment

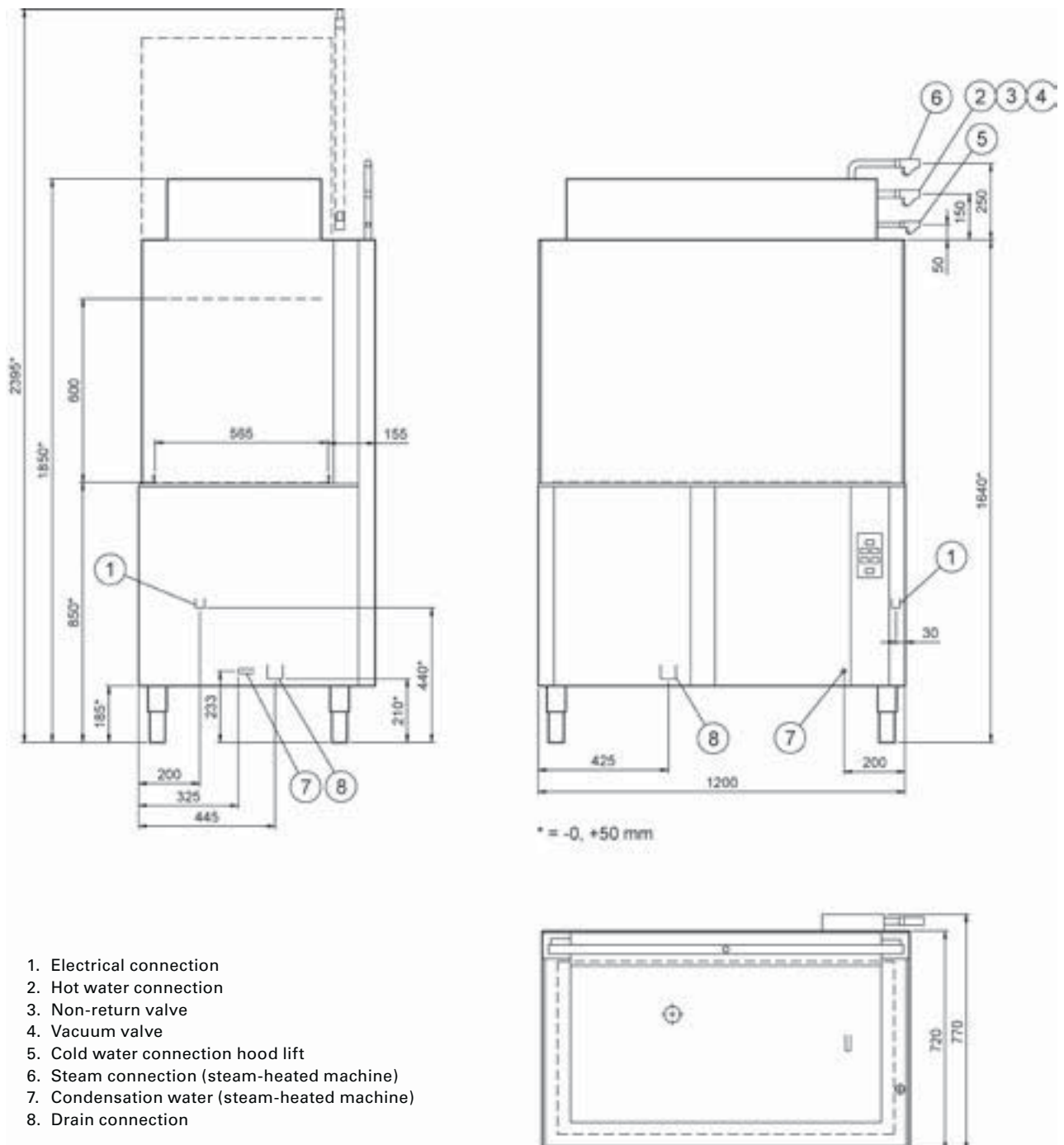
Machine Model	Art.no.	Dimensions in mm LxWxH	Booster heater	Electrical connection
WD-12GHE	3-5202	1200x720x1850/2395	12 kW	400V 3N~ 50Hz 16,4 kW 35A
Extra equipment	Art.no.			
Steam-heated version (150-250kPa)	3-5256			
Booster pump	3-5251			
Connection to 230V/3/50Hz	3-5259			230V 3~ 50Hz 16,4 kW 63A
Additional basket	3-5253			
Additional booster 12kW for cold water connection	3-5260		2x12 kW	400V 3N~ 50Hz 28,4 kW 50A
Suction channel 200x100mm	3-5254			
Automatic electrics for suction fan (1-phase closing contact)	3-5254A			

Connection



1. Basin line
2. Roller conveyor

■ Dimensional drawings



1. Electrical connection
2. Hot water connection
3. Non-return valve
4. Vacuum valve
5. Cold water connection hood lift
6. Steam connection (steam-heated machine)
7. Condensation water (steam-heated machine)
8. Drain connection





Aishwarya Consolidates Pvt. Ltd.,

#19, Frist Floor, 10th 'B' Main, 27th Cross,
Third Block Jayanagar, BANGALORE – 560 011, INDIA
Tel: +91-80-2664 1200/1/2 Fax: +91-80-2664 1204

E-mail : aishtek@vsnl.com www.aishwaryaconsolidates.com